



ITADAKIMASU

# JAPANESE TEA

Kyoto Area

Experience Japanese Tea!  
Walking Map



# Relax and take a break with green tea!

You can drink delicious green tea  
with a meal or whenever you want to relax.

In fact, there's more to green tea than its flavor.

Green tea has plenty of components that are good for your body, too.

Catechins are just one example.

Cold brew green tea is especially recommended  
to boost your immune system or relieve stress.

It's the perfect drink for when you want to take a break.

These effects vary depending on how you brew or drink the tea.

Find your own favorite way to enjoy tea  
according to your lifestyle and mood.

## ITADAKIMASU About JAPANESE TEA

Here you'll find stores in the <Kyoto Area> where you can experience  
the charm of green tea by touching, smelling, brewing and tasting the tea.  
Open up this map and experience tea for yourself during your sightseeing journey.

## Tea is full of components that are good for your body

### Catechins

Antioxidant  
Suppresses the rise  
in blood sugar,  
etc.

### L-theanine

Promotes  
relaxation

### Fluoride

Prevents cavities

### Vitamin C

Promotes  
beautiful skin,  
etc.

### Vitamin E

Antioxidant  
Prevents aging,  
etc.



## How to identify delicious tea

POINT  
1



The leaves are  
deep green, thin,  
and curled up

POINT  
2



They look glossy  
and feel firm

POINT  
3



They feel heavy  
in your hand

POINT  
4



They smell good

POINT  
5

Taste the tea and check its flavor, aroma, and color.  
To prevent the tea you buy from deteriorating in  
quality, it's important to store it in an airtight  
container and prevent it from contacting air as much  
as possible!



# ITADAKIMASU JAPANESE TEA



- Tea house/ cafe
- Tea utensils for sale
- Snacks for sale
- Free experience
- Guided tea brewing
- Tasting/ sampling
- Tea blending
- Facility tour
- Credit cards accepted
- Free Wi-Fi
- Parking lot
- Paid experience
- Guided tea brewing
- Tasting/ sampling
- Tea blending
- Facility tour

Scan each QR Code to open a detailed map of the shop location.

**1 Kouroan Chaho**  
 17-1 Murasakino Daitokuji-cho, Kita-ku, Kyoto-shi, Kyoto  
 ☎ 075-494-0677 Hours 9:00~17:00  
 Station Kitaoji Station Closed Tue, Wed  
 Kouroan manufactures and sells their own Uji tea. They are also working to produce hand-picked matcha and pesticide-free matcha and sencha. (Tea ceremony, matcha grinding experience, and Cha-Kabuki [tea competition] experience)

**2 Takemura Gyokusuien**  
 26-9 Yoshidahonmachi, Sakyo-ku, Kyoto-shi, Kyoto  
 ☎ 075-771-1339  
 Hours 9:00-19:00(10:00-17:00 on public holidays)  
 Station Keihan Main Line Demachiyana Station Closed Sundays  
 This local tea store is qualified to participate in the JA Kyoto tea market and has clients from famous restaurants and museums.

**3 Rokkaku Chikiriya Chaho**  
 226-2 Sanmorijicho, Rokkaku-dori Higashinoin Higashi-iru, Nakagyo-ku, Kyoto-shi, Kyoto  
 ☎ 075-221-5948 Hours 9:00~18:00  
 Station Karasuma Oike Station Closed Sun, public holidays  
 Stop by and take a break with a cup of tea near Rokkaku-do, a temple in the middle of Kyoto, and experience how tea is brewed.

**4 Sabo Adonis Fukujuso**  
 Daimaru Kyoto 2nd floor, 79 Tachiuri Nishimachi, Shijo-dori Takakura Nishi-iru, Shimogyo-ku, Kyoto-shi, Kyoto  
 ☎ 075-288-6212 Hours 10:00~20:00(L.O.19:30)  
 Station Shijo Station Closed New Year's Day (same as Daimaru Kyoto closures)  
 A cafe where you can enjoy aromatic sweets made with Uji tea perfectly paired with high-quality Uji tea.

**5 Fukujuen Kyoto Flagship Store**  
 Shijo-dori Tominokoji-kado, Shimogyo-ku, Kyoto-shi, Kyoto  
 ☎ 050-3152-2901 Station Karasuma Station, Shijo Station Hours 11:00-19:00 (hours differ by floor)  
 Closed New Year's Day, every Wednesday (2nd & 3th floors: every Tue, Wed)  
 The Kyoto flagship store of Fukujuen, a longstanding tea store that was founded in 1790. Experience new encounters with Uji tea and Kyoto's imperial culture at this complex facility.



**6 Gion Tsujiri [Gion Main Store]**  
 573-3 Gionmachi Minamigawa, Higashiyama-ku, Kyoto-shi, Kyoto  
 ☎ 075-551-1122 Station Gion-Shijo Station Hours 11:00-18:00 (19:00 on Sat, Sun, public holidays)  
 Closed Irregular closures  
 Delivering the rich flavor and enjoyment of Uji tea to the world from Gion, Kyoto.

**7 Saryo FUKUCHA**  
 Kyoto Station Bldg. Central Gate 2nd floor, 901 Higashishiojicho, Karasuma-dori Shiokoji-saganu, Shimogyo-ku, Kyoto-shi, Kyoto  
 ☎ 075-744-0552 Hours 8:30~21:00(L.O.20:30)  
 Station Kyoto Station Closed Irregular closures  
 In addition to authentic Uji tea, you can try tea blends made with Japanese tea and herbs, as well as signature desserts made by a pâtissier.

**8 Tea artisan Shimizu Ippoen [Kyoto Main Store]**  
 665 Honkwaracho, Higashiyama-ku, Kyoto-shi, Kyoto  
 ☎ 075-202-7964 Hours 11:00-16:00 (last order)  
 Station Shichijo Station Closed None (except for year-end & New Year's holidays)  
 A cafe directly managed by a tea wholesaler since 1945. Enjoy Lunch and sweets made with stone-milled Uji tea. Recipient of the Tripadvisor Certificate of Excellence.

**9 Otanien Chaho**  
 7 Imagumano Naginomoricho, Higashiyama-ku, Kyoto-shi, Kyoto  
 ☎ 075-561-4658 Hours 9:00~18:00  
 Station Tofukuji Station Closed Sun, public holidays  
 Choose from a wide selection of authentic, high-quality tea leaves from Uji. Their Uji matcha desserts, nama chocolate (a type of ganache), and parfaits are popular. (Paid matcha-whisking experience)

**10 Tsubakido Chaho**  
 635 Fukakusa Kitashinmachi, Fushimi-ku, Kyoto-shi, Kyoto  
 ☎ 075-644-1231 Hours 10:00~17:00  
 Station Keihan Main Line Sumizome Station Closed Sun, public holidays  
 To provide greater enjoyment of Japanese teas, this store offers Japanese tea samples, sells store-made Japanese sweets and original tea utensils, and has an adjacent tearoom called Chikusei located behind the store. (Sencha tea ceremony experience)

# ITADAKIMASU JAPANESE TEA

- Tea house/ cafe
- Tea utensils for sale
- Snacks for sale
- Free experience
- Guided tea brewing
- Tasting/ sampling
- Tea blending
- Facility tour
- Credit cards accepted
- Free Wi-Fi
- Parking lot
- Paid experience
- Guided tea brewing
- Tasting/ sampling
- Tea blending
- Facility tour

Scan each QR Code to open a detailed map of the shop location.



**3 Rishouen Chaho**  
4-10 Todomonmae, Uji-shi, Kyoto

☎ 0774-22-0877 Hours 9:00~18:00  
Station Keihan Mimurodo Station  
Closed Summer and New Year's break

Assistance is available in German, English, and French. Each tea sold by this professional store has its own story.

**4 Itohkyuemon [Uji Main Store]**  
19-3 Todo Aramaki, Uji-shi, Kyoto

☎ 0774-23-3955 Hours 10:00~18:30  
Station Keihan Uji Station  
Closed None

Expressing the appeal of tea from various approaches to bring teatime into your life.

**5 Tsuen Chaya**  
1 Uji Higashiuchi, Uji-shi, Kyoto

☎ 0774-21-2243 Hours 10:00~18:00  
Station Keihan Uji Station  
Closed None

Since 1160. This teahouse has been in business at the foot of the Uji Bridge since the end of the Heian period. They offer a wide selection of teas, from everyday green teas to tea ceremony teas, premium gyokuro teas, and other tea varieties.

Uji Cha Dojo "Takumi-no-Yakata"  
A hands-on tea cafe where you brew and drink your own tea

17-1 Uji Mataburi, Uji-shi, Kyoto

☎ 0774-23-0888 Hours 11:00~17:00 (L.O. 16:30)  
Station Keihan Uji Station  
Closed Wednesdays, Obon (Aug 14-16)  
Year-end & New Year's holidays (Dec 29 - Jan 4)

A Nihoncha (Japanese Tea) Instructor will provide a detailed explanation on how to brew delicious Uji tea.

**7 Fukujuen Ujicha Kobo**  
10 Uji Yamada, Uji-shi, Kyoto

☎ 050-3152-2930 Hours 10:00~17:00  
Station Keihan Uji Station  
Closed Mondays (if Monday is a holiday, closed on the following day instead)

This hands-on complex facility contains a workshop where you can make tea, a cafe where you can enjoy food and sweets made with tea, and a shop where you can purchase original Uji teas and tea utensils.

**1 Marukyu Koyamaen Makishima Factory**  
172-4 Nakagahara, Makishimacho, Uji-shi, Kyoto

☎ 0774-20-0909 Hours 9:30~17:00  
Station Kintetsu Mukaijima Station  
Closed Sat, Sun, public holidays

The shop carries an assortment of Uji teas and matcha snacks. Feel free to purchase them as mementos of your visit. (Factory tour by reservation only)

**2 Yamamasa Koyamaen**  
96 Kubo, Oguracho, Uji-shi, Kyoto

☎ 0774-24-1122 Hours 9:00~17:00  
Station Kintetsu Ogura Station  
Closed Sundays

Since the early Edo period, Yamamasa Koyamaen has handled the entire tea-making process from cultivation to manufacture under the motto of "Taste First." (You can sample recommended brands of sencha and hojicha.)

# ITADAKIMASU JAPANESE TEA

- Tea house/ cafe
- Tea utensils for sale
- Snacks for sale
- Free experience
- Guided tea brewing
- Tasting/ sampling
- Tea blending
- Facility tour
- Credit cards accepted
- Free Wi-Fi
- Parking lot
- Paid experience
- Guided tea brewing
- Tasting/ sampling
- Tea blending
- Facility tour

Scan each QR Code to open a detailed map of the shop location.

**1 Asahien Seichasho**  
76 Uji Niban, Uji-shi, Kyoto

☎ 0774-22-4113 Hours 9:00~20:00  
Station Uji Station Closed None

Loved by everyone for over 200 years. The tea leaves at this store are 100% Uji tea!



**4 Ochano Kanbayashi**  
43 Uji Myoraku, Uji-shi, Kyoto

☎ 0774-22-5318 Hours 9:00~17:00  
Station Uji Station Closed None

This longstanding store has been business for over four centuries and is managed by the descendant of an Uji tea master. It has won the Uji tea competition for three consecutive years. (Experience matcha-making with a millstone or tea ceremony in a tearoom [tea ceremony experience])



**2 Itohkyuemon [JR Uji station square store]**  
16-1 Uji Umonji, Uji-shi, Kyoto

☎ 0774-22-0475 Hours 10:30~19:00  
Station Uji Station Closed None

Despite being located in front of the station, the store offers a tasteful interior where you can spend a relaxing moment with Uji tea.



**3 Tsujiriichi Honten**  
156 Uji Myoraku, Uji-shi, Kyoto

☎ 0774-88-5365 Station Uji Station  
Hours 10:00~18:00 (Teahouse 11:00~17:00 LO 16:30)  
Closed Open all year (except Dec 31 & Jan 1)

The flagship store of Tsujiri, a longstanding Uji tea seller founded in 1860. The store is located in a renovated traditional Japanese-style house.



**5 Mitsuboshien-Kanbayashisanmyu-Honten Sankyuan Uji Tea Reference Library**  
27-2 Uji Renge, Uji-shi, Kyoto

☎ 0774-21-2636 Hours 9:00~18:00  
Station Uji Station Closed None

This Uji tea specialty store has been in business for 500 years and has been passed down over 16 generations. Free entry to the Uji Tea Reference Library. (Paid matcha-making experience)



**7 Matsusakaya Kahachi Honten**  
83 Uji Myoraku, Uji-shi, Kyoto

☎ 0774-21-2304 Hours 10:00~17:00  
Station Uji Station Closed Irregular closures

This store has been dedicated to upholding the quality of Uji tea for over 170 years since its founding in 1843. (You can sample the teas that you purchase at the store.)



**6 Horii Shichimeien**  
84 Uji Myoraku, Uji-shi, Kyoto

☎ 0774-23-1118 Hours 9:00~17:30  
Station Uji Station Closed Irregular closures

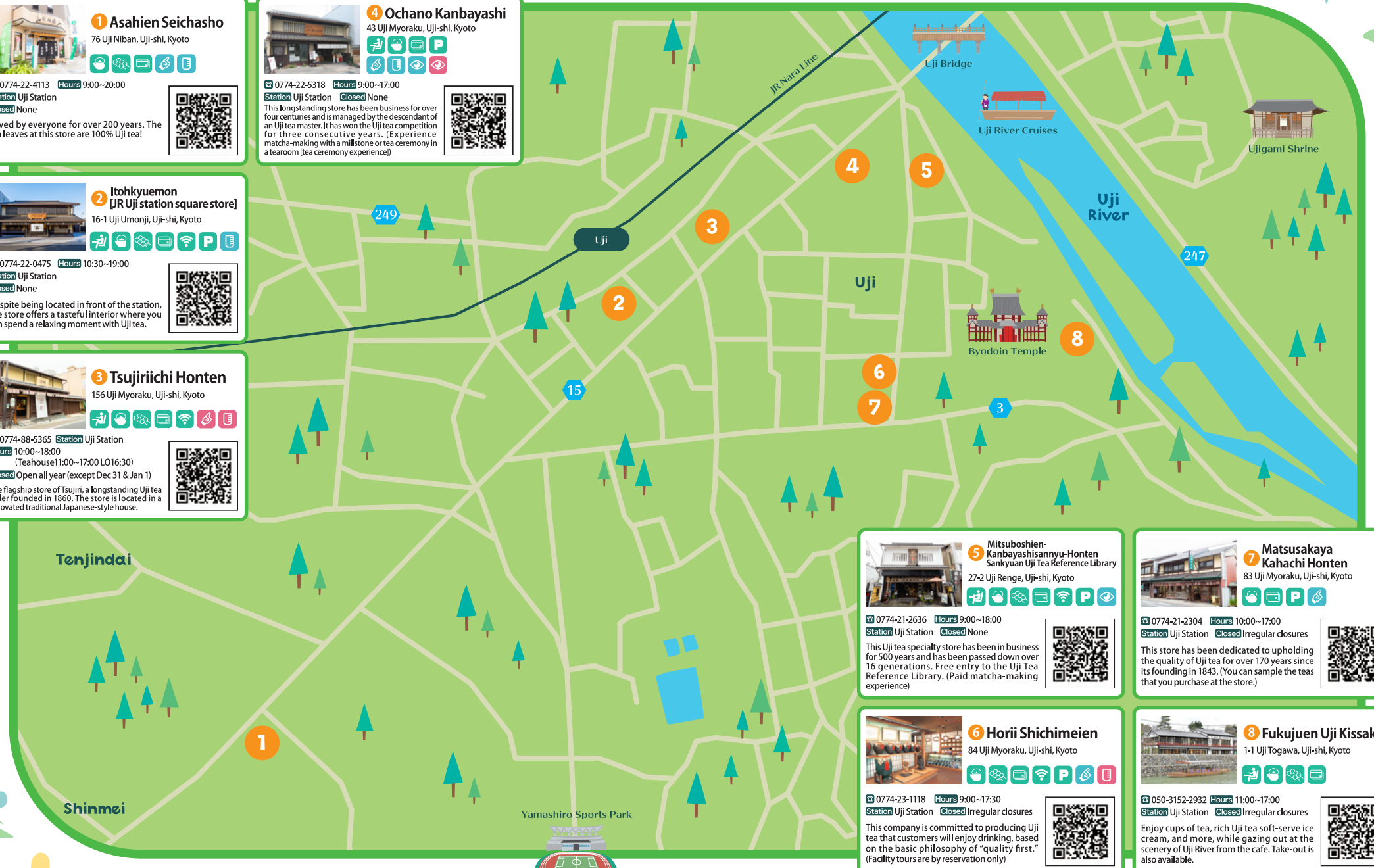
This company is committed to producing Uji tea that customers will enjoy drinking, based on the basic philosophy of "quality first." (Facility tours are by reservation only)



**8 Fukujuen Uji Kissakan**  
1-1 Uji Togawa, Uji-shi, Kyoto

☎ 050-3152-2932 Hours 11:00~17:00  
Station Uji Station Closed Irregular closures

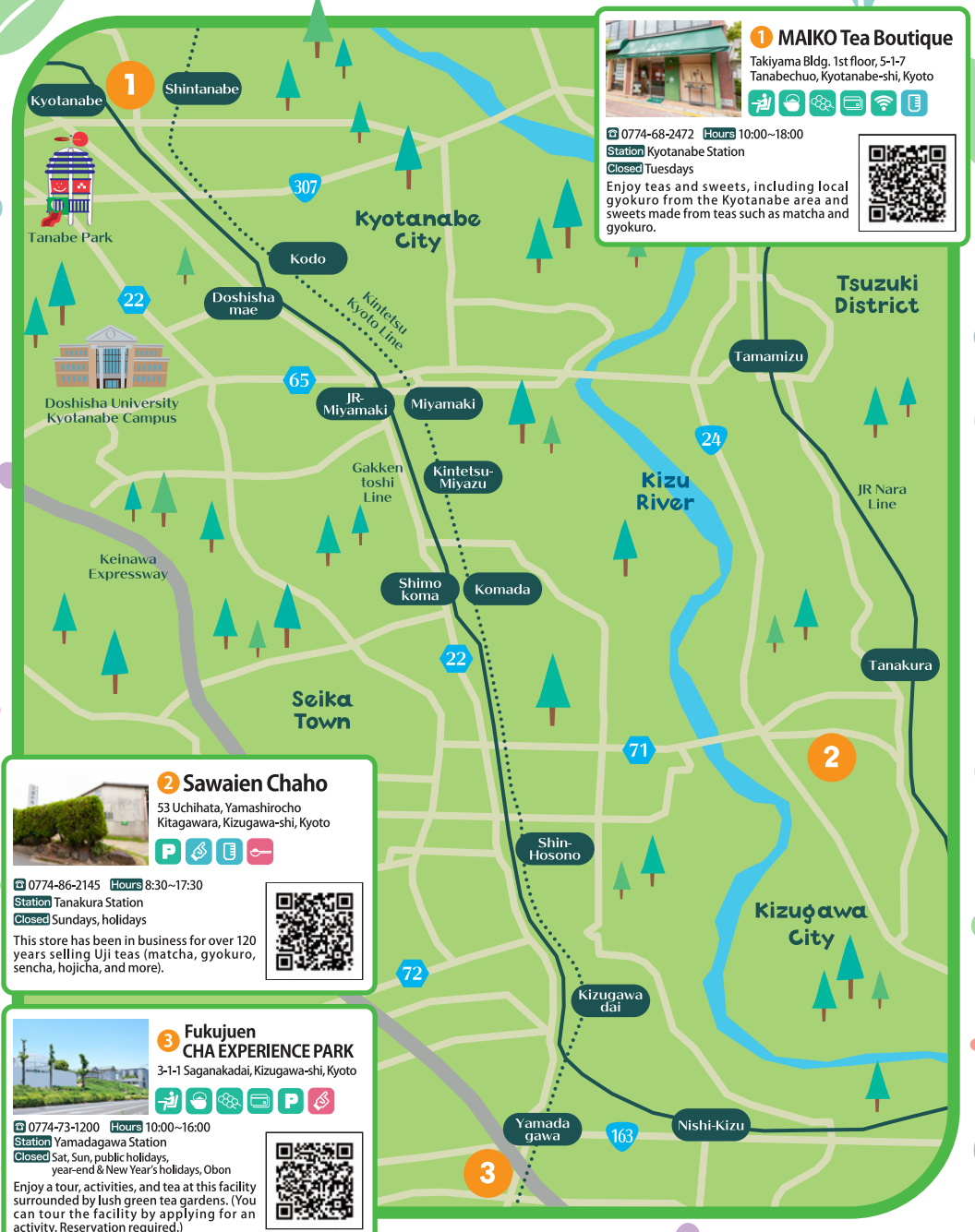
Enjoy cups of tea, rich Uji tea soft-serve ice cream, and more, while gazing out at the scenery of Uji River from the cafe. Take-out is also available.

# ITADAKIMASU JAPANESE TEA

- Tea house/ cafe
- Tea utensils for sale
- Snacks for sale
- Free experience
- Guided tea brewing
- Tasting/ sampling
- Tea blending
- Facility tour
- Credit cards accepted
- Free Wi-Fi
- Parking lot
- Paid experience
- Guided tea brewing
- Tasting/ sampling
- Tea blending
- Facility tour

Scan each QR Code to open a detailed map of the shop location.



**1 MAIKO Tea Boutique**  
 Takiyama Bldg. 1st floor, 5-1-7 Tanabechuo, Kyotanabe-shi, Kyoto  
 ☎ 0774-68-2472 Hours 10:00-18:00  
 Station Kyotanabe Station  
 Closed Tuesdays  
 Enjoy teas and sweets, including local gyokuro from the Kyotanabe area and sweets made from teas such as matcha and gyokuro.

**1 Ryuhoen**  
 97 Gonokuchi Honmachi, Ujitawara-cho, Tsuzuki-gun, Kyoto  
 ☎ 0774-88-2038 Hours 9:00-17:00  
 Station Gonokuchi (bus stop)  
 Closed Sun, public holidays

**2 Ichinosho Kyoeseicha**  
 23 Gonokuchi Kitadoyama, Ujitawara-cho, Tsuzuki-gun, Kyoto  
 ☎ 0774-88-2707 Hours 10:00-17:00  
 Station Shitamachi (bus stop)  
 Closed Tuesdays

**3 Ujitawara Seichajyo**  
 4-1 Gonokuchi Shibo, Ujitawara-cho, Tsuzuki-gun, Kyoto  
 ☎ 0774-99-8008 Hours 9:00-17:00  
 Station Shitamachi (bus stop)  
 Closed Sat, Sun

**4 Taishoen Chaho**  
 7-2 Tachikawa Nishigaio, Ujitawara-cho, Tsuzuki-gun, Kyoto  
 ☎ 0774-88-2012 Hours 9:00-17:00  
 Station Ichumae (bus stop)  
 Closed Sun, public holidays

**2 Sawaien Chaho**  
 53 Uchihata, Yamashirocho Kitagawara, Kizugawa-shi, Kyoto  
 ☎ 0774-86-2145 Hours 8:30-17:30  
 Station Tanakura Station  
 Closed Sundays, holidays

**5 Kobataen**  
 49 Tachikawa Nakasuji, Ujitawara-cho, Tsuzuki-gun, Kyoto  
 ☎ 0774-88-2115 Hours 9:00-17:00  
 Station Omiyamichi (bus stop)  
 Closed Sun, public holidays, Obon, year-end & New Year's holidays

**6 Asadaen Main Store**  
 9 Yuyadani Nishishiotani, Ujitawara-cho, Tsuzuki-gun, Kyoto  
 ☎ 0774-88-2223 Hours 10:00-18:00  
 Station Uji Station  
 Closed Sundays

**3 Fukujuen CHA EXPERIENCE PARK**  
 3-1-1 Saganakadai, Kizugawa-shi, Kyoto  
 ☎ 0774-73-1200 Hours 10:00-16:00  
 Station Yamadagawa Station  
 Closed Sat, Sun, public holidays, year-end & New Year's holidays, Obon



## Tea Demand Creation Council

Office: Japan Tea Commerce & Industry Cooperative Association

81 Kitabancho, Aoi-ku, Shizuoka-shi, Shizuoka

TEL:054-271-6161 FAX:054-254-0415